

# How to connect macOS to the Ricoh color printer/color scanner/color scanner

If you encounter problems during any of the below steps, email CFL IT Support at [support\\_cfl@mailplus.wisc.edu](mailto:support_cfl@mailplus.wisc.edu).

1) Download the driver from

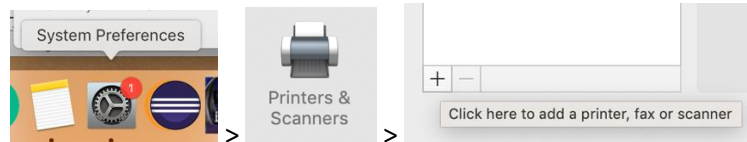
[http://support.ricoh.com/bb/html/dr\\_ut\\_e/rc3/model/imc4500/imc4500.htm](http://support.ricoh.com/bb/html/dr_ut_e/rc3/model/imc4500/imc4500.htm)

- a. If you don't know your operating system, click on the apple icon on the upper left-hand corner, and select "About This Mac". The pop-up screen will tell you
  - i. ex: macOS Mojave

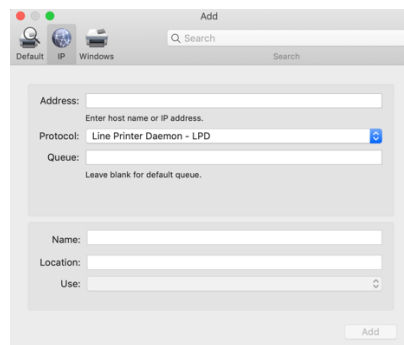


2) Install the driver just like any other Mac software

3) Go to System Preferences > Printers & Scanners > Add a printer



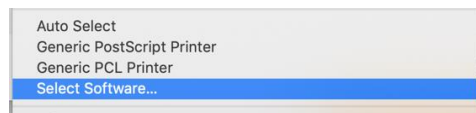
a. Click on "IP"

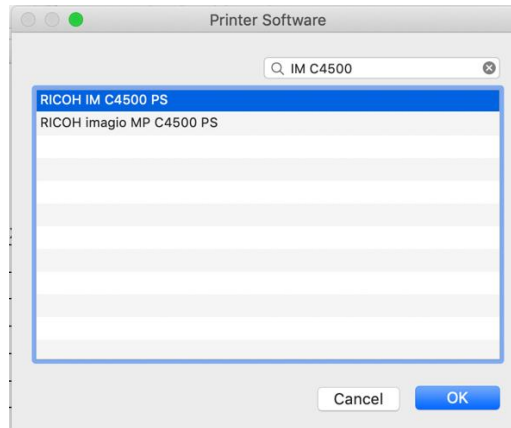


5) Filling the blanks

- a. Enter "144.92.62.230" for Address
- b. Select Line Printer Daemon - LPD for protocol
- c. Leave Queue for blank
- d. Enter your preferred Name and location for the printer
- e. Select the correct driver for "Use"

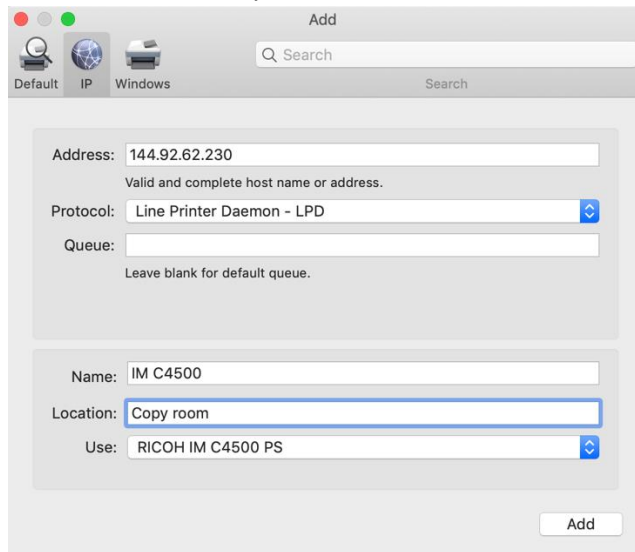
i.





ii.

6) It should look like this when you are done



a. Make sure you are either connected to the ethernet or to the UWNet wifi (not eduroam!)

7) Click on Add! You should be good to go